



Mayville Senior School

Remove Curriculum 2021/2022

# Art

During KS3, we aim to develop and practice an understanding of art and design, as an essential element of general education. A variety of artistic skills and experiences are encountered.

## EXPLORATION OF VISUAL ELEMENTS

- Drawing, painting, graphics, modeling with clay and wire, casting, repeat printing, local and historical art-based research.
- Knowledge of materials, techniques and presentation.
- Use and understanding of: line, shape, form, colour, tone, pattern, texture and space.
- Use and awareness of observational skills.
- Imaginative work.
- Colour theory and practice.

## METHOD

- Develop skills from analysing and recording from observation, memory, and imagination, using a variety of media. Every other week, sketch-book drawing homework to record information and reference for independent work.
- Organise and select a range of source material to stimulate and develop a range of ideas or themes.
- Discuss the implications of source material on the development of their work.
- Use a wide range of media and techniques to express feelings and communicate meaning.
- Select from the range of visual elements and interpret their use in making images.
- Explore and experiment with materials and ideas for three-dimensional work.
- Modify and refine the work as the result of continued and informed discussion.
- Self-assessment, helping pupils to become aware of what they do and to explain it within their work.
- Communication of specialist vocabulary to convey work/methods etc.
- Plan and make further developments in response to their own and the evaluations of others.
- Explore the way that artists work producing images, symbols and objects. Compare and consider the different approaches taken by artists from different backgrounds/surroundings.
- Express opinions about (and justify) preferences towards certain kinds of art, taking into account different viewpoints.
- Develop an understanding of different periods of art. Analyse the work of influential artists who exemplify periods of art history. Learn of the methods and motives used by such artists.
- Lessons are structured around a single 45 minute period per week for Remove, with 30 minute sketch-book homework every other week. Independent extension topics are available, if required, to support and complement the themes of work covered in the studio, for those gifted and talented.
- Groups are mixed and split between two teachers. They will have art the whole year.
- Throughout their time in the art studio, pupils are encouraged to develop their individual style, with emphasis upon improving their technique and their understanding of artistic principles.

## BY THE END OF KS3 PUPILS SHOULD BE ABLE TO:

- Record observations & experiences appropriate to their intentions.
- Analyse & evaluate images, objects & artefacts showing some understanding of context.
- Develop and explore ideas using a variety of media processes & resources, reviewing, modifying, and refining their work as it progresses.
- Present a personal response, making connections with the work of others and taking ownership of their own ideas.





## Dance

Students will learn many different genres of dance, from ballet through to contemporary and be taught to perform short dances, showing an understanding of style.

In technique classes, they will learn exercises and routines in a variety of styles. In choreography classes, pupils will work in small groups / trios / duos / solo, to explore and communicate ideas and issues / movement-based studies working from different stimuli.

Through compositional sessions, students will learn to select and develop a range of choreographic skills and support their own dance compositions with descriptions of their intentions. Throughout these classes, students will create and perform short dances, using the skills they have studied.

Students will study safe dance and have an understanding of how to prepare for dance, whilst improving fitness and stamina, through the progression of the technique class.





## Design Technology

Design and Technology is taught at KS3 through a series of units. The subject is taught in mixed ability classes over two 50 minute lessons per week for remove and one lesson per week for LIV and UIV

Pupils will use a wide range of materials to design and make products. Planning their ideas with some precision, taking into account how products will be used, who will use them, how much they will cost and their appearance. They will further develop their understanding of designing and making by investigating similar products and finding out about the work of professional designers and how products are manufactured in industry. Design and Technology helps pupils prepare for tomorrow's rapidly changing technologies. They will learn how to think and intervene creatively and to solve problems as they arise.

### **REMOVE METALS AND ALLOYS. ENAMELLING PROJECT- JEWELLERY DESIGN.**

Pupils will design for a given market and research the needs of the consumer. Designing and planning their ideas with dimensions. Pupils will also be able to recognise and characterise different types of metals and alloys.

### **LIV TEXTILES. FLEECE HAT PROJECT**

Pupils will design and manufacture a fleece hat. Sewing will be performed by hand and with a machine. They will also learn how the physical and working properties of a range of textiles affect their performance and be aware of sustainability issues associated with the production of textile products.

### **UIV**

In UIV students will work on a series of units to prepare them for KS4 DT. This will include aspects of Timbers, Textiles Electronics, metals and alloys, CAD and the Design Process. They will produce a range of creative and unique projects to include a coat hook, a bag and a jewellery box.



# Drama

Drama will aid a pupil's confidence in expressing themselves.

Initially, in Remove and Lower IV pupils will explore and develop spatial awareness to be able to adapt to a performance area. Drama exercises are used to improve listening skills; to enable pupils to work as individuals; to express their ideas to a group, and to listen to the ideas of others. Scripted duologues will be used to explore characterisation as well as improvisation based around given ideas culminating in a performance in front of their peers. Pupils will learn drama vocabulary so that they can evaluate what they hear and see.

Drama in Remove is a fun course which prepares pupils for the skills needed for GCSE. Students experience explorative strategies such as hot seating, thought tracking and physical theatre and they learn how to convey believable characters. A variety of stimuli will be used such as posters, songs and letters and these will encourage discussion and form the basis of pupils' own improvisations. They will also have the opportunity to work on extracts from scripts.

Drama gives pupils the opportunity to work as a team, make decisions, voice their ideas, delegate, prioritise and work towards a final product. It also encourages pupils to question what they see and critically appreciate drama as an art form, whilst improving self-presentation skills and gaining confidence at speaking in public.



# English

During the first year at Mayville, the English Department aims to provide a stimulating environment, to encourage an enjoyment of reading and the study of language and literature. We aim to develop our pupils' confidence in their study of English, building on their prior knowledge and skills and securing these foundations, to enable them to achieve success in this subject.

## READING

Pupils are encouraged to enjoy their reading and to read widely, fluently and with understanding. Typical class texts during the first year include a Shakespeare play (A Midsummer Night's Dream or The Tempest) and a shared class novel ('Trash' by Andy Mulligan), Skellig by David Almond, 'Private Peaceful' by Michael Morpurgo, and 'A Monster Calls' by Patrick Ness. Pupils will also read a range of poems, exploring different forms, and finish the year with a unit of work on myths, legends and fairy tales. Alongside this, they will be expected to read several other novels during the year chosen from the library and have a period every week dedicated to developing their independent reading. Regular reading at home is also encouraged and rewarded through the Reading Challenge.

## SPEAKING & LISTENING

Pupils are encouraged to speak confidently and listen carefully. They will be given the opportunity to discuss, argue, debate, improvise, persuade and much more. We hope to develop their capacity for effective speaking and listening through the range of contexts outlined above. There are specific assessments within the units of work which will allow pupils to prepare for and develop speaking for specific audiences and purposes. There is also a weekly debating club run by the English department which pupils who are interested in developing skills further can attend.

## WRITING

Pupils are encouraged to write clearly and accurately. Over the course of KS3, they will develop their ability to write for a wide range of purposes and audiences in a variety of forms. In Remove, we focus on narrative and descriptive writing explicitly, but also give opportunities for writing poetry, scripts, letters and diaries during the course of the year. They will learn to use accurate spelling, punctuation and grammatical structures, building on their previous knowledge and skills.

In addition to this, KS3 pupils will be encouraged to enter local and national poetry and writing competitions throughout the year.



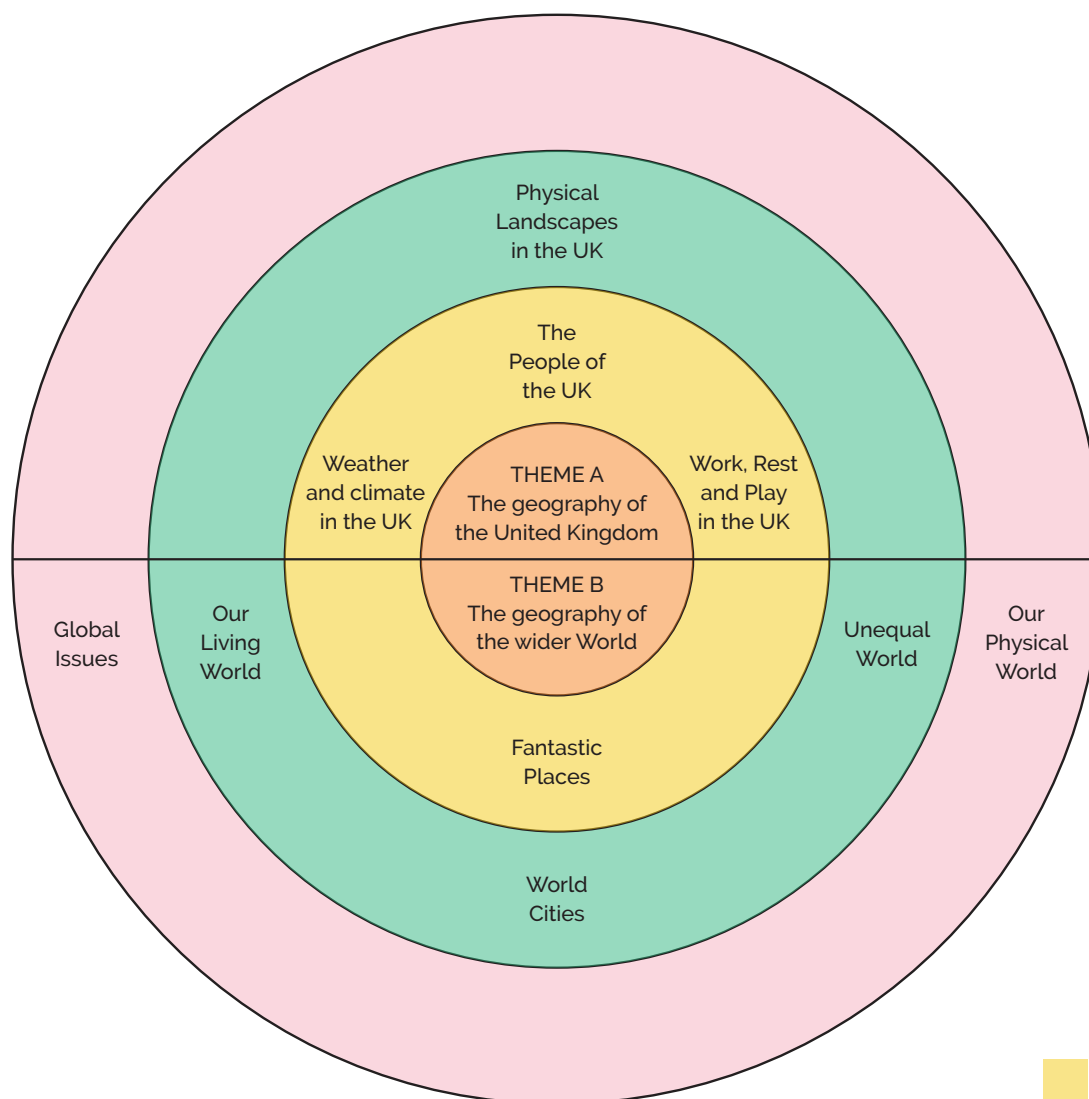
# Geography

Remove pupils commence a three year programme of study in Geography, that prepares pupils fully for the demands of GCSE Geography, should they choose to continue the subject at this level. The course provides the strong foundations and skills practice that pupils need, to prepare them fully for their future. Topical, relevant content is utilised to enthuse pupils and help to build essential knowledge and understanding. The course is divided into two themes:

## THEME A: THE GEOGRAPHY OF THE UNITED KINGDOM

## THEME B: THE GEOGRAPHY OF THE WIDER WORLD.

The subject is taught to mixed ability classes, with two periods a week. A strong emphasis is placed on meeting the individual learning needs of all pupils. As this is their first year in the Senior School, time is taken to instruct pupils on how to organise and manage their study. Pupils can expect a lot of variety in their lessons. Emphasis is placed on pupils developing enquiry skills, working in groups and teams, and using a range of media to help enrich their learning. Current news events and local issues are incorporated into the course as much as possible, in order to make the subject relevant, up to date and stimulate pupil interest in the world around them. Class discussions are encouraged and pupils are often asked for their own views on a particular issue. Geography offers all pupils something of interest, to enhance their understanding of the world in which we live. Pupils will complete some local fieldwork during the course of the year.



Pupils will start the GCSE Geography course towards the end of UIV

Remove  
LIV  
UIV





## History

Remove follow a course which is designed as an introduction to the study of history. During this year, they learn the skills necessary for the study of history in later years. The subject is taught in mixed gender classes, with two periods per week and 20 - 30 minutes is allocated for homework. Lessons are based on mixed ability classes and emphasis is placed on meeting the individual learning needs of all pupils.

The aim of the course is to make history an enjoyable subject and to allow pupils some freedom to assess for themselves, the significance of the main events, the people and the changes they have studied.

### Topics:

#### HISTORICAL SKILLS

Chronology, fact & opinion, using historical evidence, bias, interpretation, empathy and significance.

#### MEDIEVAL REALMS 1066-1500, INCLUDING

- Norman Conquest
- The Church and Religion
- The Murder of Thomas Becket
- Castle Development
- King John and The Magna Carta
- Black Death & Peasants' Revolt
- Richard III and the Princes in the Tower
- Medieval Law and Order

Trips may include visits to Portchester Castle and the surrounding locality.

In Lower IV, historical skills continue to be honed and the topics studied are the Industrial Revolution and Crime and Punishment.

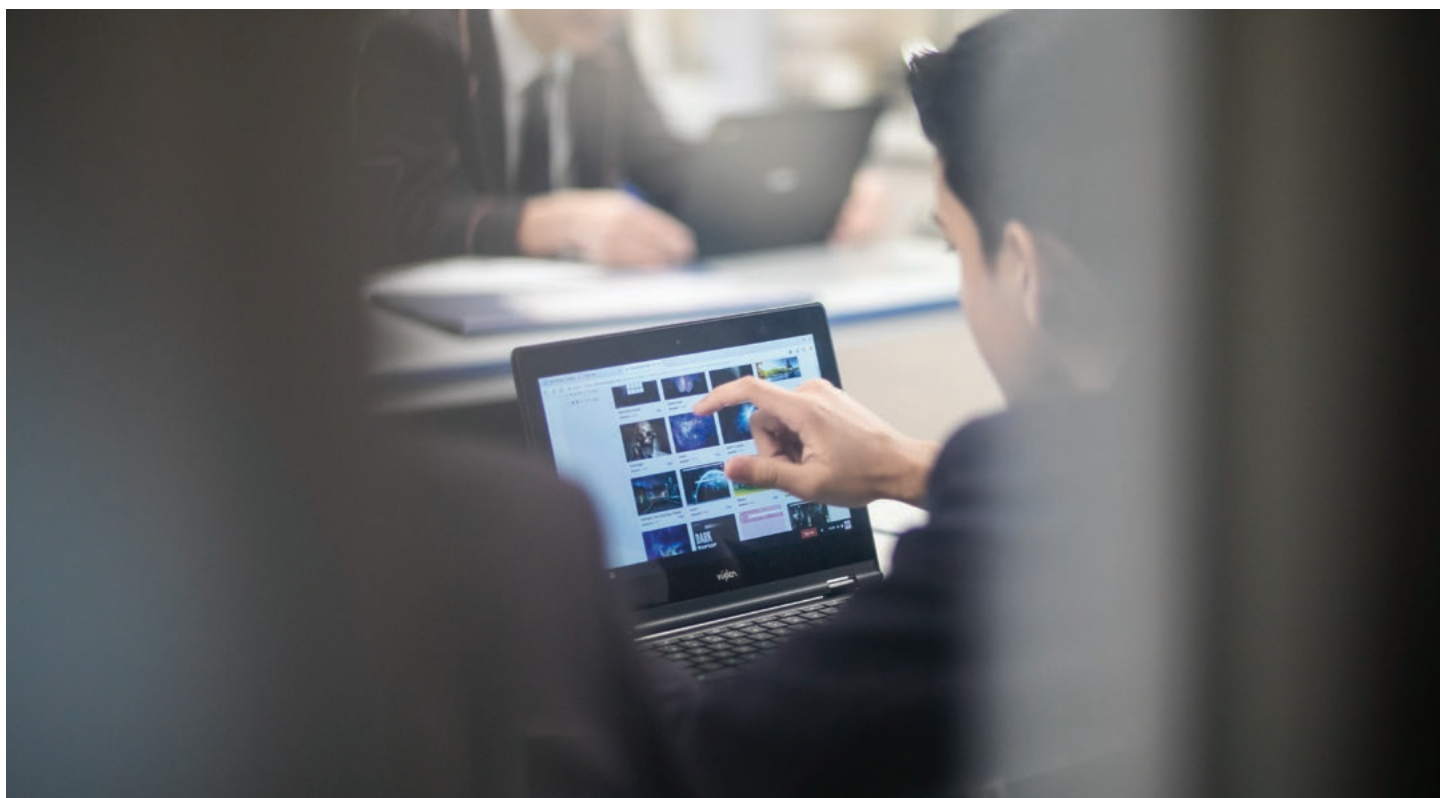
Upper IV study Technology, War and Identities – a world study after 1900.



# Computing & ICT

The study of ICT and Computing is hugely important to industry and the economy. The skills developed through the study of the subject are increasingly sought after. There has been rapid growth in the use of mobile devices and the Internet, leading to excellent employment opportunities. Our students need to understand and play an active role in the digital world that surrounds them, not just become passive users of technology. Through ICT and computing, they will learn how to solve problems when things go wrong, how to think logically and critically, and to recognise the impact that technology has on the world around us.

Students cover a wide-ranging programme of study in Remove, Lower IV and Upper IV, which develops skills in Computing and ICT. The scheme of work includes units of work which cover some aspects of Computer Science, so that students gain an insight into programming and coding. Each year pupils will also receive essential Internet Safety awareness and advice.



Units of work include the following topics (the list is not exhaustive):

## REMOVE

Introduction to the network; Online safety; Computer basics (hardware, software, peripherals etc); making games in Scratch; BBC Micro:Bits; Cryptography; Faking it using graphics software; Computer control; Spreadsheets; HTML coding and website design.

Within each topic, pupils will use a wide range of software to create a variety of outcomes.

## LIV

Pupils will develop and build upon their work, using software that they have previously encountered before progressing to more complex software and concepts.

## UIV

Pupils will be completing the Inspiring Digital Enterprise Award, known as iDEA. This is an international programme that helps to develop and demonstrate digital, enterprise and employability skills.

# Library

Pupils in Remove are timetabled for a weekly library lesson, as part of their Literacy provision. In these lessons, pupils are engaged in a wide range of activities. These may include: discussing new book releases, sharing pupils' current reads, writing book reviews, making book trailers and quiet reading. As the pupils progress through KS3, they are also introduced to Information Literacy Skills (citation, referencing, how to research effectively etc.), to prepare them for entry into KS4 and Further Education.

All pupils have access to the wide range of fiction and non-fiction books stocked in the library and are encouraged to read from many different genres. They also have logins for our eBook library, provided by the SLS who ensure age appropriate content. In addition, pupils are allowed to bring their e-readers into school for use during their library lesson. At the end of every lesson the librarian will read from a book chosen by the pupils to demonstrate and promote a love of reading. Pupils are encouraged to read for pleasure on a daily basis, ideally for a minimum of 20 minutes. The pupils can work towards their bronze, silver, gold and platinum reading awards with individual targets set which are tailored to each pupil's reading skills and preferences. Our aim is to encourage our pupils to become lifelong readers.

Pupils are able to take part in a wide range of literary activities, through the library, to further broaden their experiences. In Remove, they are able to participate in the Portsmouth Literature Quiz and from Lower IV they are eligible for the Portsmouth Book Award Longer Novel. We also offer a 'Meet the Author' programme throughout the year, where authors are either invited into Mayville, often as part of 'Book Week', or we travel to an external location.

The library is open daily from 8.00am to 3.45pm, with Prep running from 4.00pm to 5.00pm. The pupils are able to use the library resources to complete homework, revise for a test, research a project, exchange books or simply read quietly. There are also lunchtime clubs available for the pupils to attend, including debate club.





# Mathematics

During Remove, a lot of emphasis is put on making maths fun and enabling the pupils to become confident in the subject at their own level. Every child is taught to their individual ability using support, core and extension material.

It is important that pupils have a good knowledge of their times tables and an appropriate amount of time is spent developing arithmetic skills, both mentally and with the use of a calculator. The year group is divided into four groups, ranging in size from approximately 8-16 pupils. Setting is established within the first half term, but is regularly reviewed as we closely monitor the progress of every pupil.

**All pupils should be equipped with a pen, pencil, 30cm ruler, rubber, protractor, a pair of compasses and a Casio FX83 scientific calculator.**

Pupils use the MyMaths website to enhance and consolidate their learning. They use this platform to complete homework, alongside traditional written homework tasks, in preparation for written exams.

During the year, we cover work on decimals, fractions, percentages, ratio, indices, angles, area, volume, circles, probability, handling data and basic algebra.

During Lower IV we extend topics covered in Remove and also look at linear equations, compound measures, transformation geometry, graphs, inequalities, Pythagoras Theorem, constructions and loci.

This puts in place the foundations for IGCSE, which is a 3 year course beginning in UIV. We offer both higher and foundation tiers as well as extending pupils with Additional Maths, in preparation for A-level, or building confidence with achievement in functional skills.

# Modern Foreign Languages

This year, pupils will study both French and Spanish in Remove. The MFL course for Remove is designed to involve pupils in understanding and communicating in French and Spanish about a variety of topics. Pupils discover francophone and hispanic countries and learn about customs, people and the geography of those countries. In doing this, they develop the skills of listening, speaking, reading and writing. They build up their knowledge of French and Spanish gradually, using creative skills such as singing, rapping & acting out short role-plays.

By the end of the year, it is hoped that pupils will have grown in confidence in their ability and knowledge of these subjects, enjoyed learning a different language and had fun finding out about different cultures.

French and Spanish magazines are available for quiet reading in the Library and we subscribe to two excellent language learning websites, to supplement pupils' language learning. We try to provide opportunities for first-hand practice in French and Spanish. It is hoped that many pupils will join us on our trips abroad to Normandy and Munich.

At the end of Remove, pupils will have the opportunity to choose their second language, which they will study in Lower IV and Upper IV. They will choose two languages to study from French, German and Spanish.

We hope that all pupils will enjoy learning new languages and embrace learning about new cultures.





# Music

Through the integrated activities of performing, composing and listening, pupils will develop their musical skills in a practical and fun way. The Music Studio is very well equipped and pupils will be able to play a variety of musical instruments, including keyboards, African Djembe drums, Samba drums and many other tuned and untuned instruments.

In Remove, pupils are taught to understand and recognise the elements of music to use as a resource when composing, creating and improvising, and to use the elements effectively when performing.

Pupils explore rhythm and note values and perform and notate their own compositions, through the genres of Popular Music and Music from the Western Classical Tradition. They also examine form and structure and listen to examples of music structures they are exploring and compose and perform within these forms.

Pupils research musical arrangements and develop their knowledge and understanding of folk music as a musical genre. Pupils will perform as part of small ensembles and arrange their own folk songs.

They listen to examples of music from different times and different places and compare the use of instruments, musical elements and compositional devices used.

Pupils are introduced to the modern symphony orchestra and learn about its layout, grouping and the instruments which belong to each section, including their individual and characteristic timbres.

Pupils explore the voice, through singing a wide range of different types and styles of songs, developing their ability to sing music in two (or more) parts.

Pupils have the opportunity to perform musically throughout the year at school events.



# PSHE

MHS is a school which believes in excellence through nurture of the individual pupil. Our ethos is defined by a belief in the talents and potential of every child and a commitment to the development of their abilities, aptitudes, and promise, wherever these may lie. The PSHE programme is integral to the development and fulfilment of the potential we nurture. It promotes personal, social, health and economic and emotional education in a way that enables pupils, now and in the future to: develop in informed, rounded, secure, healthy and balanced ways; to manage their lives effectively, happily and successfully; to thrive as individuals and as members of families and our wider society, with a respect for Fundamental British Values.

The PSHE programme is an integral, essential and dynamic part of the school curriculum and pupils' experience and, as such, we aim to deliver it in ways which are purposeful, engaging and enthusing to pupils. This enables them both to embrace its relevance and value and to be active, responsive and reflective in their involvement.

## Programme Guidance

### CONTENT:

The PSHE programme has the following key areas:

Thriving in the School, its Curriculum, and its Community

Health and Wellbeing

Relationships and Sex Education

Living in the Wider World

Spiritual, Moral, Social and Cultural Development / Fundamental British Values

The elements of PSHE are delivered through the dedicated programme, as well as through other subjects in the curriculum, notably English, Drama, Biology, Religious Studies, MFL, Geography, History, ICT and PE.

### DELIVERY:

At MHS, we have a PSHE dedicated lesson once a week where tutors follow the PSHE programme but have the flexibility to respond to the needs of their pupils. It is a discussion-based programme that encourages pupils to think, as well as confidently and respectfully discuss and debate the issues raised. There are also three PSHE days per year, where pupils are off timetable, in order to explore key areas in more depth.







## PE – Girls

The Senior School offers a wide range of physical activities both in the PE curriculum and during extra-curricular time.

\*In the Autumn Term, the girls are taught netball, tennis and badminton.. In the Spring Term, they also take part in basketball and football and in the Summer Term, they enjoy cricket and athletics.

Extra-curricular activities take place after school, for those enthusiastic pupils who wish to improve their skills and game play. The girls have the opportunity to represent the school in various sports, including badminton, netball, rounders, cricket, swimming, athletics and cross-country.

Mayville uses many off-site facilities to accommodate the depth of Physical Education that we provide. We have a twenty acre site at Eastney, where the girls can play netball and cricket, as well as take part in athletics activities. Wimbledon Park Sports Centre provides the school with close facilities for badminton and basketball and HMS Temeraire is used for athletics.

The three-tier house system at Mayville offers all pupils the chance to compete in inter-house competitions at various times of the year. These include Sports Day, which takes place at HMS Temeraire at the end of the Summer Term. The house system is a vibrant and integral part of the school and enables pupils, of all levels, to experience some competition in Physical Education, along with the feeling of being part of a team.

The opportunity for pupils to extend their knowledge of Physical Education is provided in Lower V and Upper V, with GCSE PE and Cambridge National Level 2 Award.

*\* Due to current COVID infection compliance measures these activities are subject to change.*

## PE – Boys

The Senior School offers a wide range of activities both in and outside curriculum P.E. time.

\*During the Autumn and Spring terms, Remove are taught football, rugby, badminton and tennis; during the Summer Term, they enjoy cricket, volleyball and athletics.

Extra-curricular activities take place after school, for those enthusiastic pupils who wish to improve their skills and game play.

A full programme of Inter-School fixtures is planned, providing every opportunity for the boys to compete in a whole range of sporting activities. We participate in fixtures with local schools and in local competitions, as well as County and National ISA competitions. Some examples include the Portsmouth Schools' and ISA swimming galas, English Schools' Football Association (ESFA) cup competitions and ISA athletics competitions.

Alongside this, we utilize the three-tier house system at Mayville, to offer pupils the chance to compete against each other in football, rugby, badminton, cricket and athletics at various times of the year. The house system is a vibrant and integral part of the school and enables pupils of all levels to experience some competition in Physical Education, along with the feeling of being part of a team.

Mayville maintains the depth of its P.E. curriculum through the use of many off-site facilities, including our 20 acre sports field at Cockleshell Gardens. Wimbledon Park Sports Centre also provides a specialist arena for the teaching of badminton within the school, as well as after school clubs.

In Remove, Lower IV and Upper IV pupils focus on the development of their skills, game play and understanding of the rules and tactics in the diverse palette of sports we offer. There is then an opportunity for enthusiastic pupils to extend their knowledge of Physical Education in Lower V and Upper V with GCSE P.E and the Cambridge National Level 2 Award.

*\* Due to current COVID infection compliance measures, these activities are subject to change.*







## Religious Education

Religious Education follows a three year course in Key Stage 3, which is designed to act both as a background to the GCSE course and as a sound and constructive basis for understanding and appreciating the principles of religion for those who do not continue further R.E. as an academic study. As pupils enter our senior school from a variety of academic backgrounds, the course is designed to be suitable for all, whatever courses they may have followed previously and whatever their own cultural or religious background.

Although the Government maintains that R.E should be a compulsory part of the curriculum, it is not designated as a specific National Curriculum subject and, therefore, there are no strict rules about curriculum content, but, of course, there are guidelines. Most importantly, the Government has stipulated that R.E. should be 'predominantly Christian' and that during the course of a child's total school career, they should learn about more than one religion. The other main world religions are also a feature of their study.

### REMOVE

The first few lessons are of an introductory nature, exploring such questions as, "What is religion?" "What is the inner self?" "How many religions are there?"

Pupils also learn how to access their Bibles, to extract stories and to explore themes which reveal an understanding of the Christian story. They are also encouraged to explore symbolism in stories, artefacts and rituals from other world religions. Personal research, culminating in PowerPoint presentations, will be encouraged.

The course offers ample opportunity for pupils to explore some of the deeper questions of belief, what motivates people to behave in a certain way, questions of morality and so on. Discussion and reflection is therefore always encouraged and no-one is ever directed to adopt any particular point of view.

# Science

Remove are studying the new National Curriculum for Key stage 3 Science, using Kerboodle Activate! Book 1 Science resources (also available online – your son/daughter will have been issued a login for this).

The topics covered during this year will be:-

## BIOLOGY

- Organisms: Movement; Cells
- Ecosystems: Interdependence; Plant Reproduction
- Genes: Variation; Human Reproduction

## CHEMISTRY

- Matter: Particle Model; Separating Mixtures
- Reactions: Acids and Alkalis; Metals and Non-Metals
- Earth: Earth Structure; Universe

## PHYSICS

- Forces: Speed; Gravity
- Electromagnets: Potential Difference and Resistance; Current
- Energy: Energy Costs; Energy Transfer
- Waves: Sound; Light

Within each unit, pupils have the opportunity to carry out experiments, to do some reading, to answer questions and to try to discover some information for themselves – beginning the development of a spirit of scientific inquiry that has potential benefits across the curriculum.

There is also a strong focus on scientific literacy.

Pupils will study at least one new topic each half term, which will be formally assessed either once the topic is complete or in the last week of the half term. The result can be seen in their exercise books and will be shared at parents evenings.





# Homework

Homework is set for all subjects and a timetable is issued to pupils with guidance on how to organise their time so that homework can be completed successfully.

## KS3 INDEPENDENT HOMEWORK PROJECTS (IHP) FROM JANUARY

Independent Homework Projects (IHP) are specific pieces of work which are set as a project in addition to the normal homework timetable. Whilst they have a clear focus pupils are able to work independently, developing their own direction of learning and unique outcomes.

Most subjects in KS3 will set an IHP during the year. The tasks will be published in advance and each one will have a fixed start and completion date. Pupils are responsible for completing IHPs and will be given support and advice by their teachers. Start & completion dates will be also published on the school website.

## HOW WILL THE IHPs BE MARKED?

Each pupil will receive feedback from their teacher, giving a subject level (based on the schools KS3 7 - 1 level descriptors) an effort grade, a comment on the progress made in the project (W/W/W) and a target for future improvement (EBI).

## THE GENERIC KS3 LEVEL DESCRIPTORS FOR ATTAINMENT ARE:

7	Consistently outstanding understanding of the subject. Shows insight, flair and exhibits a scholarly attitude to work. Uses initiative to work independently
6	Excellent understanding of all material. Produces work of a consistently excellent standard. Will occasionally use initiative to learn independently.
5	Very good grasp of the subject. Whilst some work will be excellent, consistent excellence has yet to be achieved.
4	Consistent, secure grasp of material with rare instances of weakness but has yet to develop initiative and excellence.
3	Generally sound grasp of the subject with minor weaknesses and some unreliability in key areas.
2	Work can reach the level expected but there are areas of weakness. Needs a high level of guidance to achieve a modest outcome.
1	Work rarely reaches the level expected and there are areas of significant concern. Lacks purpose and needs constant direction.

Subjects have their own specific attainment descriptors.

## KS3 EFFORT GRADES:

A	Positive and strives to produce improvements in standard or to maintain excellence.
B	Displays the approach expected of a typical student at Mayville High School. Attentive and aims to produce work reflecting level of ability.
C	Needing a more consistent approach or working steadily at a level that doesn't reflect true ability or attitude. Room for improvement.
D	Failing to apply him / herself to tasks on a regular basis. Clear signs of under-achievement and / or disruptive behaviour.



## WHAT WILL HAPPEN IF THE IHP IS NOT COMPLETED?

If the pupil does not complete the IHP, they will be set an after school detention by the department concerned to finish the work. Parents will also be informed. If there is a genuine reason why a pupil cannot complete an IHP, it is essential that parents inform the school before the deadline date.

## SUPPORT IN COMPLETING IHPs

If the pupil does not complete the IHP, they will be set an after school detention by the department concerned to finish the work. Parents will also be informed. If there is a genuine reason why a pupil cannot complete an IHP, it is essential that parents inform the school before the deadline date.

## IHP TIMETABLE FOR 2021

No other homework will be set by the subject from the start date until the hand in date for the IHP.

Autumn Term	Start Date (W/B)	Hand in Date (W/B)	Spring Term	Start Date (W/B)	Hand in Date (W/B)	Summer Term	Start Date (W/B)	Hand in Date (W/B)
N/A			English	3-1-22	24-1-22		EoY exam revision No IHPs this half term	
N/A			History	31-1-22	21-2-22			
N/A			Science	21-2-22	7-3-22	Geography	6-6-22	27-6-22
N/A			MFL	14-3-22	25-4-22			

# Homework Timetable – Remove 2021-22

	SUBJECT	GROUP	DUE IN	SET BY
MONDAY	English	G2	Friday	GC
	Maths	G1	Thursday	JW
	Maths	G2	Thursday	GR
	Science	B1	Friday	NR
	Geography	Group 1	Monday	SSC
	Geography	Group 3	Friday	AB
TUESDAY	Maths	B2	Following Tuesday	NC
	Geography	Group 2	Following Tuesday	SBA
	History	Group 1	Following Thursday	AB
	R.E.	Group 2	Following Tuesday	GC
	Spanish	Group 2	Following Tuesday	CMz
	Art	Group 4	Following Tuesday	
	Dance	Group 1	Following Tuesday	CD
	Music	Group 3	Following Tuesday	AT
WEDNESDAY	Science	G2	Following Monday	NR
	Science	G1	Following Monday	SA
	French	Group 2	Following Wednesday	NLS
	French	Group 3	Following Wednesday	NB
	Spanish	Group 1	Following Wednesday	CMz
	Art	Group 3	Following Wednesday	SL
	Dance	Group 4	Following Wednesday	CD
	Music	Groups 2 & 4	Following Wednesday	AT
THURSDAY	Maths	B1	Following Tuesday	LA
	History	Group 3	Following Thursday	NSt
	R.E.	Group 3	Following Thursday	GC
	French	Group 1	Following Thursday	NLS
	French	Group 4	Following Thursday	NB
	Spanish	Groups 2 & 3	Following Thursday	CMz
	Art	Groups 1 & 2	Following Thursday	SL
	Dance	Group 1	Following Thursday	CD
	Music	Group 1	Following Thursday	AT
	Dance	Group 2	Following Thursday	AGRA
FRIDAY	English	G1	Following Wednesday	GO
	English	B1	Following Friday	AMA
	English	B2	Following Friday	SHc
	Science	B2	Following Friday	KJ
	History	Group 2	Following Friday	NSt
	R.E.	Group 1	Following Friday	GC

- Art / Dance / Drama / DT / Music Homework will be set every other week, where required.
- ICT – 20 minutes of typing club to be completed each week



## KS3 Homework 2021-22

REMOVE	FREQUENCY	LIV	FREQUENCY	UIV	FREQUENCY
English	Weekly	English	Weekly	English	Weekly
Maths	Weekly	Maths	Weekly	Maths	Weekly
Science	Weekly	Science	Weekly	Physics Chemistry Biology	Weekly Weekly Weekly
French	Weekly	French	Weekly	French	Weekly
Spanish	Weekly	Spanish /German	Weekly	German /Spanish	Weekly
ICT	Every two weeks (even)	ICT	Every two weeks (even)	ICT	Weekly
History	Weekly	History	Weekly	History	Weekly
Geography	Weekly	Geography	Weekly	Geography	Weekly
RE	Weekly	RE	Weekly	RE	Weekly
Art	Every two weeks (odd)	Art	Every two weeks (even)	Art	Weekly
Dance	Every two weeks (odd)	Dance	Every two weeks (even)	Dance	Weekly
Drama	Every two weeks (odd)	Drama	Every two weeks (even)	Drama	Weekly
Music	Every two weeks (even)	Music	Every two weeks (odd)	Music	Weekly
		DT	Every two weeks (odd)	DT	Weekly
PE	When required	PE	When required	PE	When required
Approx. time for each task	20 mins		30 mins		40 mins
Number of H/W tasks each week	12		12		15
IHP	<p>As well as regular homework Independent Homework Projects (IHP) will be set by each subject. Each subject will set one IHP in each year at KS3. Start and completion dates are produced for the IHP. Subject homework will not be set while the subject IHP is being completed.</p> <p>Remove need to complete 5 IHP's during the year, LIV &amp; UIV complete 10.</p>				
Approx. time for each IHP	2-3 hours				

## ... And Beyond the Classroom

There is also the opportunity for pupils to stay in a supervised prep session, where pupils can complete homework or catch up with work, for which a small charge is made and pupils are provided with a drink and sandwiches. This session runs until 5pm Monday to Friday.

Remove pupils also have the opportunity to be a member of the Senior Choir. This choir performs both at school functions and within the wider community.

Mayville regularly holds performance opportunities, giving pupils the chance to explore the performing arts as a dancer/ actor/ musician or in the backstage crew/ tech team. Pupils often get involved in helping with the initial ideas and planning of our performances.

Mayville runs a closed unit of the St. John Ambulance Cadets, where they have the opportunity to learn first aid and other life skills. They are then able to use these skills and go on first aid duty at such places as Fratton Park. They can join other cadets from Hampshire on camps and leadership courses.

The school is a licensed centre for Duke of Edinburgh Award and is available for pupils when they reach UIV.

Various lunchtime and after-school activities are available, some of which carry a small fee – this year they include; Netball, Trampoline, Football, Orchestra, Debating, St. John Ambulance, Badminton, with Tennis, Cricket and Rounders in the summer term.

Please do encourage your son or daughter to get involved in lunchtime and after-school clubs.



# Senior Clubs - Autumn Term 2021

Clubs will run from Monday 13th September to Friday 3rd December

(10 Weeks - See Prizegiving date)

Day	Club	Classes	Time	Staff Running the Club	Description	Venue	Total Cost
Monday	Dance Enrichment	Rem-UV Invite Only	3.45 -4.30	Miss Doughty & Mrs Graham	This club is by invitation only. Improve dance technique/prepare for performance/competition	LOH	No charge
	Football Boys & Girls	Rem-UV (Max 16)	4.00 -5.00	Mr Smith	Develop new skills and enjoy a game of football	Cockleshell	£48 per term
	Music / Orchestra	Seniors Grade 1+	3.45 -4.45	Ms Tluszc	Enjoy playing your musical instrument with others	Music Room	£60 per term
	Creative Writing	REM-UV (Max 15)	3.45 -4.45	Clubs Complete	Develop your storytelling and writing skills.	Clarendon C1	£5.20 per week
Tuesday	Badminton	REM-UV (Max 20)	4.00 -5.00	Ben Muir	A great indoor sport for when the weather is bad. Build up cardio and learn new skills	Wimbledon Park	£60 per term
	Girls Netball	REM-UV (Max 16)	4.00 -5.00	Mrs Hindson	Develop new skills and enjoy a game of netball	Cockleshell	£60 per term
	SJA Cadets	UIII-UV (Max 20)	4.00 -5.30	Mrs Rickards	Learn lifesaving skills and basic first aid, while having fun with others	HH	£24 per term (pay SJA directly)
	Drama & Musical Theatre	REM-UV (Max 15)	3.45 -4.45	Mr McCrohon	Drama and musical theatre skills	MBH2 / HH	£60 per term
	Master Chef Cooking	REM-UV (Max 15)	3.45 -4.45	Clubs Complete	Learn new recipes and improve your skills	Clarendon Food Room	£5.90 per week
Wednesday	Duke of Edinburgh	UIV & LV	3.45 -4.45	Mrs Rickards, Mrs Williams, Mrs Robinson, Volunteers	Non-competitive international Award, designed to develop positive skills and lifestyle habits	SCR / offsite walks	£50 per term
	Drama GCSE Club	LV&UV Invite only	3.45 -4.45	Mr O'Neil	Preparing for GCSE Drama.	HH / LOH	£60 per term
	Shakespeare Schools Festival	LIV-UV Invite only	4.00 -5.30	Mr McCrohon, Mrs Hepburn	Rehearsals for the Shakespeare Schools Festival	HH / LOH	£60 per term
	Tai Chi	REM-UV (Max 20)	3.45 -4.45	Andrew Cullen	Breathing and relaxation with flowing movements.	Dockyard Club	£60 per term
	Art Club, G&T	Seniors Invite only	3.45 -5.00	Miss Little	Develop your artistic skills	Art Studio	£60 per term
	DT GCSE Club	UV Invite only	3.45 -4.45	Miss McPhee	Be creative and learn new skills with recycled and different materials	DT Room	£60 per term
	Get Active	REM-UV (Max 20)	3.45 -4.45	Clubs Complete	Keep fit and get active!	Wimbledon Park (outside)	£5.20 per week



# Senior Clubs - Autumn Term 2021

Clubs will run from Monday 14th September to Friday 4th December

(10 Weeks - See Prizegiving date)

Day	Club	Classes	Time	Staff Running the Club	Description	Venue	Total Cost
Thursday	First Lego League	REM-LIV (Max 7)	3.45 -5.00	Mrs Ramsey	Join a Lego league	Lab 2	£55 per term Need to attend 2 terms
	Badminton	REM-UV (Max 20)	4.00 -5.00	Ben Muir	A great indoor sport for when the weather is bad. Build up cardio and learn new skills	Wimbledon Park	£60 per term
	Creative Arts Rehearsals	REM-UV Invite only	3.45 -4.30	Miss Doughty & Mrs Graham	Rehearsal time for scheduled events & shows	LOH	No charge
	Band / Pop Music	Seniors Grade 1+	4.00 -5.30	Mr Goodwin	Become a member of a band and play pop music	Music Room	£55 per term
	Cheerleading	REM-UV (max 15)	3.45 -4.45	Clubs Complete	Have fun, make friends and learn something new	HH	£55 per term
Friday	Production & Technical Arts	REM-UV (Max 10)	4.00 -5.00	Mr Blackburn	Gain a new qualification and learn all about the technical work required to put on an event or production	LOH/SCR	£60 per term
	Mandarin (Beginners)	REM-UV	3.45 -4.45	Mrs You	Learn a new language	L6	£60 per term
	Debate Club	REM-UV	lunch time	Mrs Matthias Rosser	Preparing for GCSE P.E.	C6	No charge
	Battle of the Bands	REM-UV (Max 15)	4.00 -5.00	Clubs Complete	Try new instruments, form a band and perform!	Music Room	£5.20 per week



# More Able, Gifted & Talented

Mayville High School is committed to ensuring that gifted and talented pupils are recognised, supported and challenged within a safe environment, that they do not underachieve and that they maximise their potential. More Able, Gifted and Talented pupils have the potential to become leaders, thinkers and creative designers of the future.

At Mayville High School, procedures for identification of MAG & T pupils will be transparent, non-discriminatory and flexible. More Able, Gifted and Talented applies to pupils who are achieving or have the potential to achieve at a level significantly beyond the rest of their peer group.

**MORE ABLE & GIFTED** describes pupils who achieve, or have the ability to achieve, at a level significantly in advance of their peers. This may be in all areas of the curriculum or in a limited range.

**TALENTED** describes pupils who have the ability to excel in practical skills such as art, DT, drama, music, dance and sport.

At Mayville, staff are asked to ensure that MAG & T pupils are stretched and challenged and that each pupil reaches their full potential. It is important all pupils are encouraged to take on a challenge, without fear of failure. We aim to present challenge and multiple opportunities to our learners at all levels within the classroom and outside the classroom, through:

- curriculum extension providing breadth, pace and depth using a range of teaching methods
- use of open-ended tasks, enabling all learners to respond at their own level
- Independent Homework Projects (IHPs) for KS3 pupils in all subjects
- problem-solving activities of varying levels of difficulty
- differentiated tasks
- setting in maths, science and MFL when possible.
- fostering the indicators of high ability in pupils, where possible, such as a passion for particular subjects/areas of interest, enthusiasm for engaging in debate and discussion on a particular subject, domain-specific talents, such as physical coordination, musical aptitude, an 'ear' for languages, etc.
- a wide range of extra-curricular and enrichment opportunities are offered by the school, including clubs, trips, educational visits, shows, competitions, national challenges, etc
- the opportunity to sit a biennial MENSA test within school
- individual pupil tracking and monitoring of progress
- supportive pastoral care/mentoring.



# Marking & Assessment

Classwork and homework is graded using a 7-point structure and a formative comment will also be given, which should indicate to the pupil what would be required, in order to attain a higher point in the next piece of work.

## THE GENERIC KS3 GRADE DESCRIPTORS FOR ATTAINMENT ARE:

- 7 Consistently outstanding understanding of the subject. Shows insight, flair and exhibits a scholarly attitude to work. Uses initiative to work independently.
- 6 Excellent understanding of all material. Produces work of a consistently excellent standard. Will occasionally use initiative to learn independently.
- 5 Very good grasp of the subject. Whilst some work will be excellent, consistent excellence has yet to be achieved.
- 4 Consistent, secure grasp of material with rare instances of weakness but has yet to develop initiative and excellence.
- 3 Generally sound grasp of the subject with minor weaknesses and some unreliability in key areas.
- 2 Work can reach the level expected but there are areas of weakness. Needs a high level of guidance to achieve a modest outcome.
- 1 Work rarely reaches the level expected and there are areas of significant concern. Lacks purpose and needs constant direction.

## EFFORT GRADES

- A Positive and strives to produce improvements in standard or to maintain excellence.
- B Displays the approach expected of a typical student at Mayville High School. Attentive and aims to produce work reflecting level of ability.
- C Needing a more consistent approach or working steadily at a level that doesn't reflect true ability or attitude. Room for improvement.
- D Failing to apply him / herself to tasks on a regular basis. Clear signs of under-achievement and / or disruptive behaviour.

Departments have produced their subject specific level descriptors which go into far more detail regarding the requirements for attainment for each point. These can be found in pupil's books and on the Mayville Website <https://mayvillehighschool.com/policies/>

# Tracking & Mentoring

In early September all Remove pupils sit CAT4 standardised ability tests. All pupils will also sit the Digital New Group Reading Test, which gives a reading age and a standardised score.

This data, along with End of Key Stage 2 tests and other relevant data, are used to give an academic profile of each pupil and a minimum expected level in each subject.

All subject staff will keep this level in their markbooks, along with any other educational information. (Special educational needs, able, gifted & talented or EAL).

All departments track the progress of every pupil during each term, against the minimum expected level. Departments have their own system of intervention if they are concerned about lack of progress. They can also refer pupils to the Form Tutor or the Academic Mentor.

Reports with attainment levels, an indication of attainment at the end of key stage 3 and effort grades are sent to Parents at the end of every term in KS3. The attainment levels are compared with the minimum expected level for each pupil and any underachievement is highlighted.

At the start of every term, the form tutors spend a lesson discussing levels from the previous report with each pupil. Targets are set and recorded in the homework diary. Any pupil with a significant amount of underachievement is seen by the academic mentor. This can result in contact with parents and various other support measures.

All subject teachers must also write Action Plans on a google doc, if the attainment level is less than the subject minimum level expected. These Action Plans are shared with the pupil and sometimes parents.

The school tracks the academic progress of every pupil in the school from Lower 1 to Upper V.

## Form Tutor Role

Mayville High School prides itself on the high quality of its pastoral care. Our belief is in 'Excellence through Nurture' and the pastoral system here is at the heart of that care and support. The system is embedded in a School which regards itself as a family and which meets as such in Assembly every Monday morning. Our care grows from a belief in the potential of every child and a sense of ourselves as a happy community, which knows and supports its members well. The recent Inspection Report described the pastoral care at MHS as excellent.

The Tutor is the pivot of the pastoral system and the first point of contact for parents, pupils, and teachers. This makes for informed, focused and responsive tutoring, and each Tutor has a Deputy to assist further their efforts on behalf of their tutees. Tutors are able to develop a close knowledge of the pupils in their charge, and they seek to be a support, stimulus and guide to the academic, personal, social and extra-curricular development of their tutees. We believe that close liaison with parents is integral to securing the best possible outcomes for our pupils, and we will be informative and responsive as your children make their way through the School. A new and vibrant PSHE programme, which includes days of activities as well as outside speakers, will enable Tutors to support the spiritual, moral, social and cultural development of pupils.

The tutorial system is underpinned by carefully integrated schemes of academic and pastoral tracking and there is further specialist advice and support embedded in our system, through the guidance of the Dyslexia Unit, the Assistant Head Pastoral (Remove & LIV), the Deputy Head Pastoral (UIV & LV), the Head of UV and the Deputy Headteacher, who is closely involved with all details of pastoral care and progress.

# Contact Information

## REMOVE FORM TUTORS:

Group 1	Mr G O'Neil	g.oneil@mayvillehighschool.net
Group 2	Mrs A Graham	a.graham@mayvillehighschool.net
Group 3	Mrs A Bailey	a.bailey@mayvillehighschool.net

## ASSISTANT HEAD PASTORAL:

Ms C Reid	c.reid@mayvillehighschool.net
-----------	-------------------------------

## CHILD PROTECTION OFFICER:

Mrs G M Rickards	g.rickards@mayvillehighschool.net
------------------	-----------------------------------

## KS3/4 ACADEMIC MENTOR / DIRECTOR OF STUDIES:

Mr C Morriss	c.morriss@mayvillehighschool.net
--------------	----------------------------------

## GIFTED & TALENTED CO-ORDINATORS:

Mrs N Ramsey	n.ramsey@mayvillehighschool.net
Mrs C Martinez	c.martinez@mayvillehighschool.net

## SCHOOL ACCOUNTANT:

Ms C Georghiades	c.georghiades@mayvillehighschool.net
------------------	--------------------------------------

## DEPUTY HEADTEACHER:

Mr J Williams	j.williams@mayvillehighschool.net
---------------	-----------------------------------

## DEPUTY HEADTEACHER:

Mrs G M Rickards	g.rickards@mayvillehighschool.net
------------------	-----------------------------------

## HEADTEACHER:

Mrs R Parkyn	r.parkyn@mayvillehighschool.net
--------------	---------------------------------

To contact any member of staff use their first initial - dot - surname @mayvillehighschool.net





---

## Further information

The school website is regularly updated with information and events, for anything else, please give us a call or send an email.

023 9273 4847

| [enquiries@mayvillehighschool.net](mailto:enquiries@mayvillehighschool.net)

| [www.mayvillehighschool.com](http://www.mayvillehighschool.com)